

Lava™ Ultimate

Restorative



A shock-absorbing material
with unique functionality.

You'll love this breakthrough material.

Lava™ Ultimate Restorative is amazing in every way—from its esthetics and excellent durability to its unique functionality.

Its innovative characteristics make it especially impressive for implant-supported crowns.

And if it's reliable in that tough role, just imagine how it will perform in other challenging single-unit indications.

- Crowns
- Onlays
- Inlays
- Veneers

And, eight natural-looking shades and two translucencies help to make it one of the most versatile CAD/CAM materials ever.

Easy to mill— no firing required.

Lava Ultimate restorative brings new meaning to the word “productivity.” The less brittle nature allows for easy milling, and no post-firing means your restoration is finished faster.

Note: All featured comments about Lava Ultimate Restorative are used with permission by the dental labs who participated in the application tests for the material.

“It's a smart alternative on implants.”

—Antonio Corradi, Product Manager,
La Struttura



“I'm impressed with the lifelike opalescence of the material.”

—Jed Miller, Certified Dental Technician,
D&S Dental Laboratory, Inc.

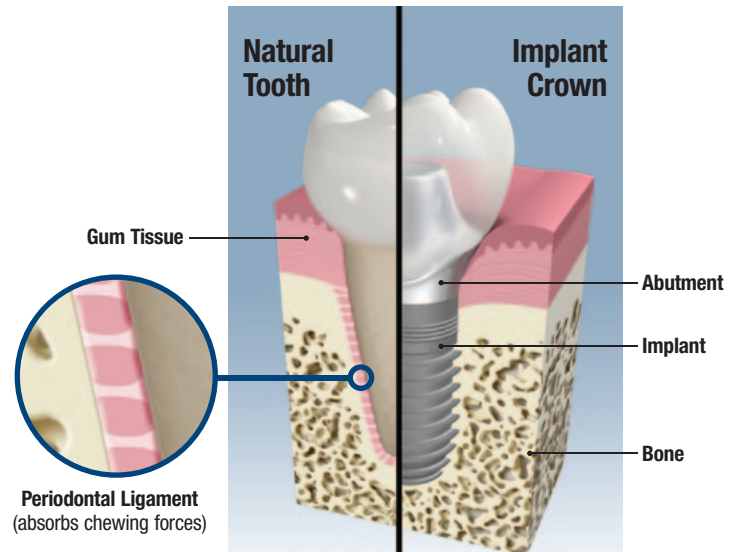
Lava™ Ultimate Restorative is uniquely different.

Shock absorbency cushions against chewing forces

Lava™ Ultimate Restorative is a resin nano ceramic—a new class of CAD/CAM material with unique functionality.

A resin nano ceramic has an elastic modulus that's comparable to dentin—which is much lower than what brittle glass ceramic materials or PFM veneering porcelains provide. This enables Lava Ultimate restorative to better absorb chewing forces and reduce stress to the restoration.

This is especially advantageous for crowns over implants. When the periodontal ligament is removed by the implant procedure, it also removes shock absorbance or sensory function—so the crown may fracture or chip.



It's tough, resilient and durable —with a 10-year warranty*

The impressive durability of resin nano ceramic also comes from its high flexural strength of 200 MPa, making Lava Ultimate restorative a tough material with excellent resiliency.

Natural-looking and tough.



A fractured partial crown made with glass ceramic material was replaced with a crown milled from Lava™ Ultimate Restorative.



“... a final restoration for implant occlusions without the harshness of porcelain.”

—Angus Barrie, Operations Manager,
UniNature Dental Enterprise

*Please refer to our Instructions for Use or our website www.3MESPE.com/LavaUltimate for more information.

It's an easy sell.

Unique handling and functional advantages

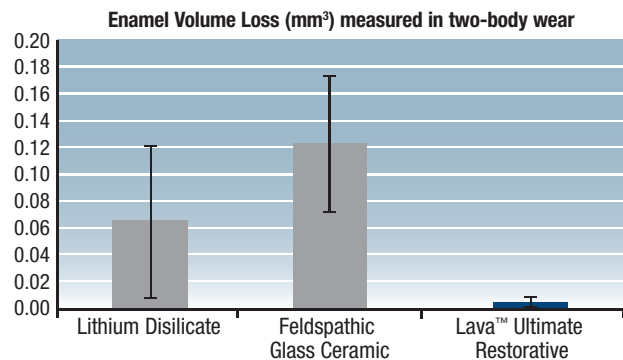
It will be easy to sell your dentists on Lava Ultimate restorative. It's tough, yet gentle. Resilient, yet easy to adjust. It offers everything dentists love ... as well as exciting new features.

- Less wear to opposing enamel than glass ceramics
- Easy to adjust and re-polish—helps the clinician to achieve the ideal occlusion needed over implants
- It allows access to an abutment and implant at any time. Just cut a hole, reseal it with a composite, and re-polish

“... we can really sell it. We love it.”

—Stan Okon, Owner, and Ryan Okon, Operations Manager, Stanley Okon Dental Lab and Milling Center

Less wear to opposing dentition

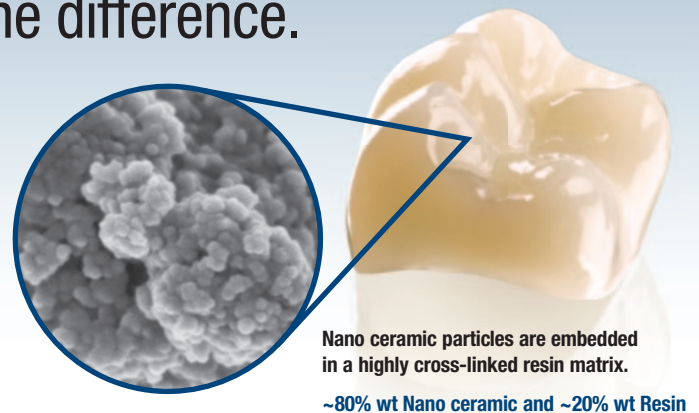


Source: University of Minnesota*

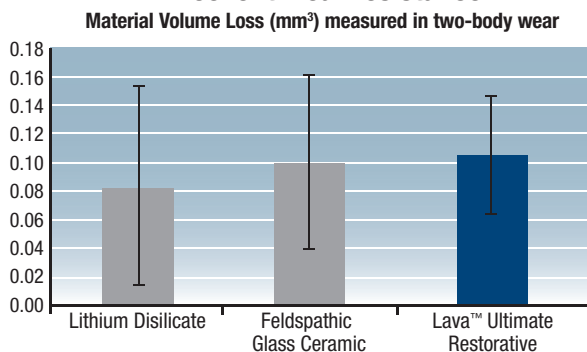
3M's TRUE nanotechnology is the difference.

Lava Ultimate restorative is the world's first resin nano ceramic restorative material. Nanotechnology and proprietary heat treatment give it a composition that's different from light-cured or self-cured composites, resulting in unique properties:

- High flexural strength (200 MPa) adds durability to posterior restoration
- Excellent wear resistance
- Brilliant and long-lasting polish
- Excellent stain resistance for color stability



Excellent wear resistance

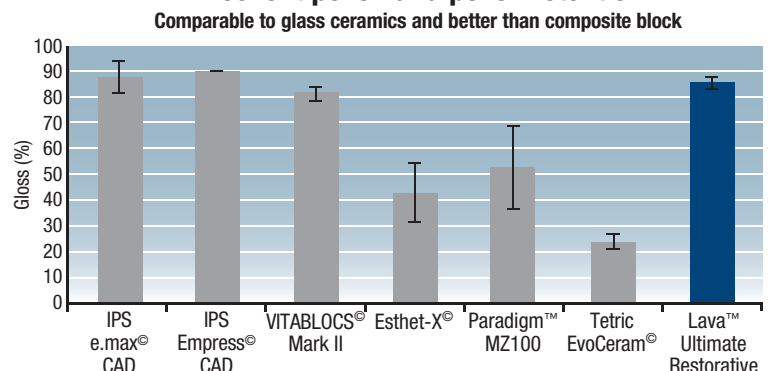


The wear of Lava™ Ultimate Restorative is not statistically different from that of IPS Empress CAD and IPS e.max CAD.

Source: University of Minnesota*

For more information on test details, see the Technical Product Profile (TPP) on our website www.3MESPE.com/LavaUltimate

Excellent polish and polish retention



After 6,000 toothbrush cycles, Lava™ Ultimate Restorative has a polish retention that is statistically higher than Paradigm™ MZ100, Esthet-X and Tetric EvoCeram, and is statistically not different from IPS e.max CAD, IPS Empress CAD and VITABLOCS Mark II. Source: 3M ESPE internal data*

Real fast. Real easy.

Works with your current Lava™ equipment

With Lava Ultimate restorative, you can experience higher productivity for more profit almost immediately.

- **The block will run on your Lava™ mill**, so it can be immediately implemented into your workflow.
- **No additional investment** in equipment or training.
- **Fast turnaround**—you can produce strong, esthetic restorations in one hour or less.
- **Higher productivity = more profit**—and, compared to ceramic restorations, your hands-on labor costs will be significantly less.



These highly cured dental blocks come in 2 sizes: Small is suitable for milling smaller restorations like inlays and onlays, and Large for fabricating crowns. The 8 shades and 2 translucencies let you deliver natural-looking esthetics.

Easily produced in about 1 hour from start to finish.*

And if your dentist is sending a digital impression, the process is even faster. Just design, mill and polish—it really is that easy.



1 Scan and design



2 Mill



3 Finish and polish

No firing is required.

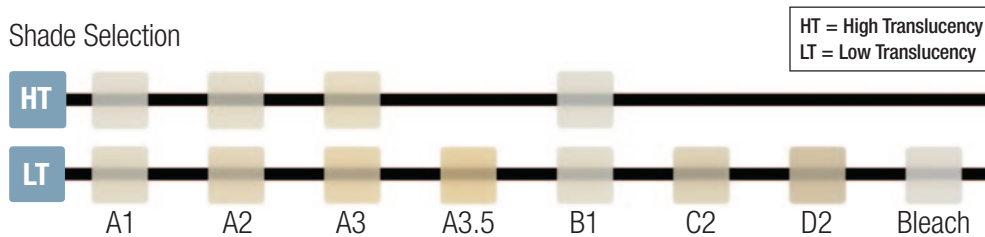


“... easy to manufacture.
Looks great.”

—Shannon Bennett, Emerald Dental Works

Available in eight shades and two translucencies.

Shade Selection



Characterization

Lava™ Ultimate Restorative is a resin nano ceramic that enables reliable characterization with light-cured restoratives. For more information, see the Clinical Preparation and Handling Guidelines for Dentists and Dental Labs on our website www.3MESPE.com/LavaUltimate



Ordering Information

Lava™ Ultimate Restorative—REFILLS

SHADE	LOW TRANSLUCENCY		HIGH TRANSLUCENCY	
	SIZE M	SIZE S	SIZE M	SIZE S
Item #	Item #	Item #	Item #	Item #
A1	69142	69154	69141	69153
A2	69144	69156	69143	69155
A3	69146	69158	69145	69157
A3.5	69147	69159		
B1	69149	69161	69148	69160
C2	69150	69162		
D2	69151	69163		
Bleach	69140	69152		

Lava™ Ultimate Restorative—TOOLS

These burs are used with Lava Ultimate Restorative

Item #	SIZE	DESCRIPTION
69237	.5mm	Tool Type 20
69243	2mm	Tool Type 21
69253	2mm	Tool Type 22
69255	1mm	Tool Type 23



Cementation



Lava Ultimate restorations must be bonded with an adhesive resin cement. 3M ESPE recommends RelyX™ Ultimate Adhesive Resin Cement with Scotchbond™ Universal Adhesive—the primer and adhesive are in one bottle. The flexibility of this system enables you to etch the tooth preparation using a self-etch, selective-etch or a total-etch technique all with one system. For step-by-step instructions, download a free copy of **Clinical Preparation and Handling Guidelines for Dentists and Dental Labs** from our website.



For the complete list of Lava Ultimate Restorative materials, visit www.3MESPE.com/LavaUltimate

3M, ESPE, Lava, Paradigm, RelyX and Scotchbond are trademarks of 3M or 3M Deutschland GmbH. Used under license in Canada. © 3M 2012. All rights reserved. Esthet-X, IPS e.max, IPS Empress, Tetric EvoCeram and VITABLOCS are not trademarks of 3M.

3M ESPE

800-243-2000

www.jensendental.com

JENSEN
DENTAL